



NATIONAL ICE SKATING ASSOCIATION

**MEETING FOR PERFORMANCE SKATERS,
COACHES AND RDPT JUNIOR GRAND PRIX
SINGLES & PAIRS**

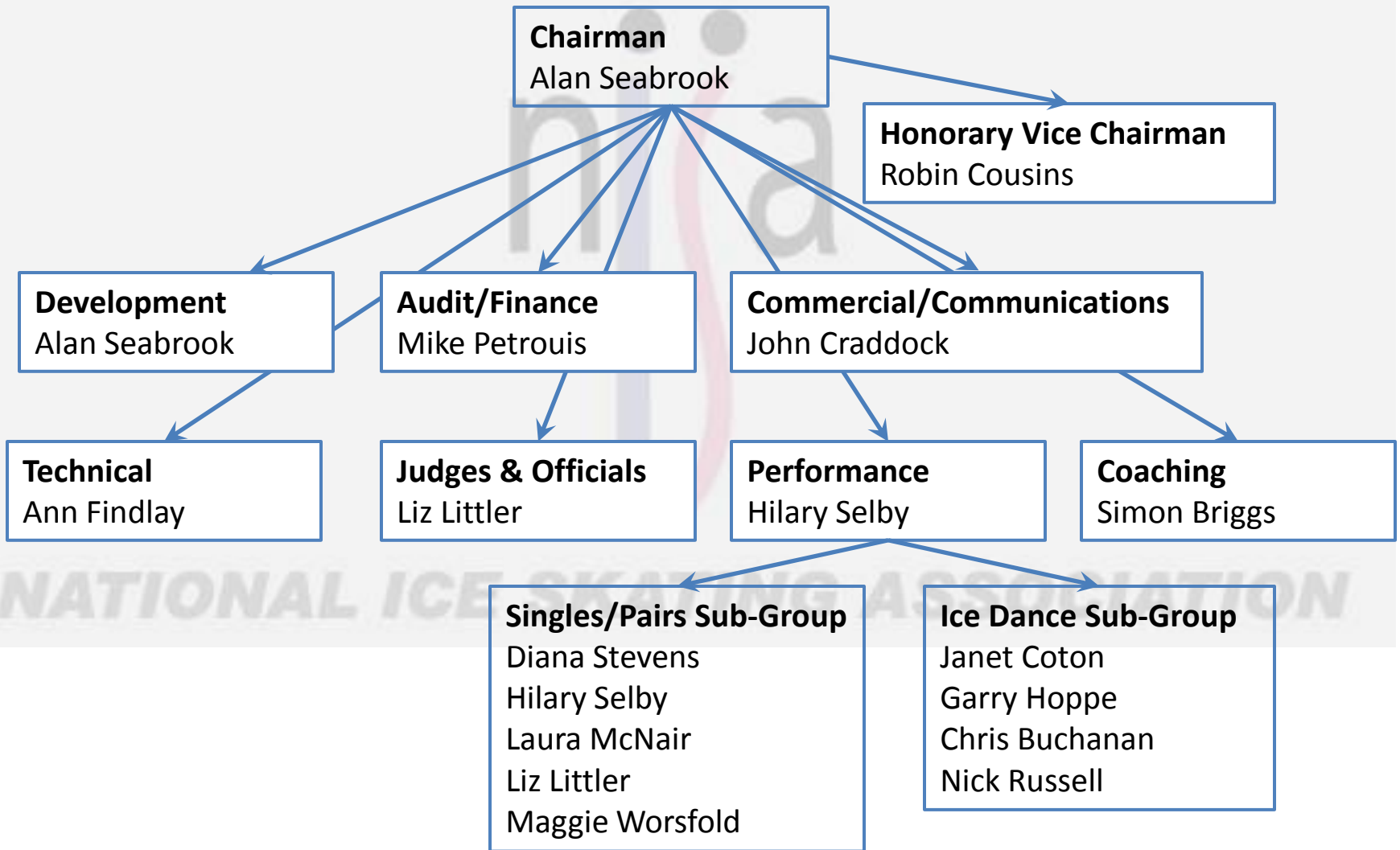
ENGLISH INSTITUTE OF SPORT, SHEFFIELD

7 July 2009

Agenda

1. Introduction & welcome
2. NISA Board responsibilities including performance structure and administration
3. International selection manual including Athlete Agreement for 2009/2010
4. Olympics 2010 including Team Leader and other accreditations
5. Update on selection to International events 2009/2010
6. NIA generic performance planning
7. Medical support
8. PR – including Tour of Team GB Olympians & Somerset House Opening 17/12/2009
9. Any Other Business

NISA Board of Directors



Performance Director

Hilary Selby

Responsibilities:

- Elite Squad Development – Figure and Short Track UK Sport/TASS funded athletes and other Performance skaters
- Provision of Performance and Development selection criteria in liaison with Development director
- Provision of ISU Championship/International competition selection criteria in liaison with the Development Director
- Protection of Eligible status of Performance skaters
- Selection of Athletes for ISU Championships and Olympics
- Sport Science, sports medicine

Performance & Development Administrator

Julia McMurray

Responsibilities:

- Providing administration support for the Performance & Development Directors
- Administering the squad databases, maintaining records and inputting of data
- Responsible for the administration associated with the GB National Squads including, as required, attendance at Squad Camps
- Maintaining and developing the Performance Figure Skating area of the NISA website
- Administration and co-ordination of arrangements and bookings for squad camps and International team travel
- Assisting the Performance & Development Directors in the preparation of presentation materials

International Selection Manual

Overview

- Performance & Development selection criteria to events 2009/2010
- NISA Development & Performance structure (including notes & Talent Identification)
- NISA Athlete Agreement (Performance & Development Teams)
- Olympic Qualification standards requirements (2010)
 - Agreement for the selection of athletes for the sport of Figure and Ice Dance
 - Schedule of Olympic Qualification Requirements
 - Selection and Announcement procedure
 - Selection timetable
- Post DRM
- NISA Appeal Procedure
- NISA Simplified Guide to Eligibility
- Summary of Eligibility to represent a country at the Olympic Games

2010 Olympic Winter Games

Team Leader – Sue Warwick

TIMELINE – WINTER OLYMPICS 2010

February 2009

Selection of NISA athletes for ISU World Figure Skating Championships

Agreement between BOA/NISA to OQS + OQR

Long list to be submitted by NISA to the BOA

March 2009

Athletes compete at World Champs to qualify quota places

August 2009

Database forms and eligibility forms to be submitted by Governing Body and received by the BOA

1st September 2009

Short list to be submitted by NISA and received by the BOA

1st September

Deadline for lodging eligibility appeals to BOA Appeals Panel for athletes sanctioned for a doping offence before 1 July 2008

24/27th September

ISU Olympic qualifying competition for NISA to qualify extra quota places

Olympic timeline continued

23rd- 28th November 2009

Domestic open qualifying event (If more than the minimum number of skaters have met the standard than quota places available) OR if quota places available and skater have not yet met the minimum standard.

1st December 2009

NISA nominations to be received by the BOA

NISA notifies all eligible individual skaters of the nominations to the BOA

4th December 2009

Final day (5.00pm) for NISA to accept appeals under the NISA Skaters Appeals process (section 6) regarding the nominations forwarded to the BOA

16th December 2009

Final date for a decision by Sports Resolutions (UK) on any appeal made under the NISA Appeals process

23rd December

BOA name athletes to the Games

5th January 2010

Final date for any appeals under BOA (section 4) Clause 6.1 to be lodged with the Governing Body

7th January

BOA confirmation of selection to be received by NISA

11th January

Final date for any appeals under BOA (section 4) Clause 6.4 to be lodged with the BOA


2010 Olympic Winter Games

Notice:

Public Networking Websites ie Facebook, MySpace, Bebo etc –
Clean them up!

Lots of public/media interest in Winter Sports will be generated
in the months preceding the Winter Games so athletes may
come under the spotlight

NATIONAL ICE SKATING ASSOCIATION

The logo for the National Ice Skating Association (NIA) is a watermark in the background. It features the lowercase letters 'nija' in a light grey font. The letter 'i' is a solid blue vertical bar with a grey dot above it. The letter 'j' is a red vertical bar with a grey dot above it. The letter 'a' is a light grey letter with a grey dot above it.

Update on Selection to International Events 2009/2010

NATIONAL ICE SKATING ASSOCIATION

NISA Generic Performance Planning

What should a plan include?

- Cover a minimum of 4 year period
- Performance skaters – Olympic cycle
- Contain objective information
- Subjective information should be kept to a minimum
- Realistic and achievable targets
- Finance – as much detail as possible
- Off-ice support – again lots of detail
- Coaching support

NATIONAL ICE SKATING ASSOCIATION

NISA Generic Performance Planning

- Where do you want to go?
- How will you get there?
- Tough decisions
- Dedication

- Compare yourself with the very best and set out how you will eventually reach **your goal**
- Share best practice with other sports

Remember

Never say

‘Our Sport is different;

‘It is how I feel on the day’

Absolute Nonsense

Performance and success are generic

Medical Support

Performance Team Doctor:

Dr Eleanor Tillett

Performance Team Physio:

Jules Ferreira

Performance Team – remember to report any injuries or medical/physio concerns to Eleanor/Jules

Development Team – If you have a medical/physio issue and you don't know where to go/what to do about it, please contact Eleanor/Jules who will be able to point you in the right direction.

PR

“Never believe anything you read or hear in the Press”

- Leave, wherever possible, comment to the Press to NISA
- If you are asked to comment – on anything other than the performance you have just completed – refer to NISA
 - Tour of Team GB Olympians
 - Somerset House Opening

NATIONAL ICE SKATING ASSOCIATION